



北京控股有限公司
BEIJING ENTERPRISES HOLDINGS LIMITED

香港 Hong Kong

地址 Address 中國香港灣仔港灣道18號中環廣場66層
66/F., Central Plaza, 18 Harbour Road, Wanchai, Hong Kong, P.R. China
電話 Tel (852) 2915 2898
傳真 Fax (852) 2857 5084
電郵 Email mailbox@behl.com.hk
網址 Website www.behl.com.hk

北京 Beijing

地址 Address 中國北京市朝陽區化工路59號院焦奧中心2號樓10層 郵編: 100023
10/F., Tower 2, No.59 Jiaobao Center, Huagong Road,
Chaoyang District, Beijing, 100023 P.R. China
電話 Tel (86 10) 8587 9099
傳真 Fax (86 10) 8587 9100



INTEGRATION
of energy and services



北京控股有限公司
BEIJING ENTERPRISES HOLDINGS LIMITED

Usher in green development Create a better life
引領綠色發展 創造美好生活

目錄

CONTENTS

Message from Management	2	管理層致辭
Company Overview	5	公司概況
High Quality Development	6	高質量發展
Company Structure	7	公司架構
Milestones	8	發展里程碑
Business Layout	10	業務佈局
Natural Gas	12	燃氣
Water	14	水務
Environment	16	環境
Beer	18	啤酒
Sustainability	20	可持續發展
Corporate Governance	22	企業管治
Visions	24	發展願景
Beijing Enterprises Group Company Limited	26	北京控股集團有限公司

高瞻遠矚

成就非凡

Begin with great foresight,

EXTRAORDINARY ACHIEVEMENTS

Message from Management

Beijing Enterprises Holdings Limited has stepped into the Hong Kong capital market for over 25 years, every trace of the long journey is of great significance.

As the largest overseas investment and financing flagship enterprise of the Beijing Municipal government, Beijing Enterprises Holdings Limited has always adhered to the purpose of "Booming in Hong Kong with a foothold in Beijing" since its establishment in 1997. After years of development, it has gradually formed a business pattern with gas, water, environment as the core of the three major public utilities, and beer based fast moving consumer goods business developing synchronously.

Since its listing, Beijing Enterprises Holdings Limited has

invested and raised over HK \$200 billion in overseas financing, which has played its due role in promoting Hong Kong's economic development and deepening economic exchanges and cooperation between Beijing and Hong Kong. In the practice of actively participating in the reform of state-owned enterprises and the marketization of urban public utilities, it gives full play to the dual resource advantages of the two markets and opens up new fields and financing channels for the economic development of the capital.

In the future, Beijing Enterprises Holdings Limited will continue to focus on high-quality resources, fulfill its responsibilities as a state-owned enterprise, focus on urban public utilities and clean energy development, lead green development and create a better life while enhancing corporate value.

管理層致辭

珠流璧轉，暮去朝來，回眸之間北京控股已踏入香港資本市場逾二十五年，漫漫征途上的每一縷足跡都意義非凡。

作為北京市政府在海外最大的投融資旗艦企業，北京控股自1997年成立以來，始終堅持「立足北京，繁榮香港」的宗旨。經過多年發展，逐漸形成以燃氣、水務、環境三大公用事業板塊為核心的主營業務，及以啤酒為主的快速消費品業務共同發展的業態格局。

北京控股上市以來共完成投資及海外融資總額超過兩千億港元，在促進香港經濟發展和深化京港兩地經濟交流合作方面，發揮了應有作用。並在積極參與國有企業改革和城市公用事業市場化的實踐中，充分發揮兩地市場雙重資源優勢，為首都經濟發展開拓了新的領域和融資渠道。

未來，北京控股將繼續集中優質資源，踐行國企擔當，專注城市公用事業和清潔能源發展，在提升企業價值的同時，引領綠色發展，創造美好生活！

DELIVERING EXCELLENCE

through our excellent members

卓越

管理

公司概況

1997年，北京控股有限公司（以下簡稱「北京控股」或「公司」，港交所股份代號：0392.HK）在香港聯合交易所成功上市，創下了多項港股記錄。目前北京控股位列恆生綜合指數成份股、恆生香港中資企業指數成份股。北京控股連續多年位列《財富》雜誌「中國500強」榜單，連同旗下香港聯交所上市公司及國內A股上市公司，總市值近2,000億港元。

北京控股作為北京市政府在海外最大的投融資旗艦企業，以多年的堅實基礎和寶貴經驗，取得行業領先地位，並憑藉全球化的視野、先進的管理理念、專業的技術團隊、成熟優質的資產配置，沿著清潔能源、生態環保的方向，將資本運作與產業經營有效結合，傾力打造出國際一流的公用事業服務平台。

Company Overview

In 1997, Beijing Enterprises Holdings Limited (hereinafter referred to as "BEHL" or the "Company", HKEX stock code: 0392.HK) was successfully listed on the Stock Exchange of Hong Kong, setting a number of Hong Kong stock market records. At present, Beijing Enterprises Holding Limited is a constituent of the Hang Seng Composite Index and Hang Seng China-Affiliated Corporations Index. It ranked on the "Fortune China 500" list for consecutive years. Together with its Hong Kong Listed companies and China A-share listed companies, BEHL has a total market capitalization approximately HK\$200 billion.

As the largest overseas investment flagship enterprise of the Beijing Municipal Government, Beijing Enterprises Holdings Limited has achieved a leading position in the industry with years of solid fundamentals and experiences. In addition, with a global vision, advanced management concept, professional technical team, mature and high-quality asset allocation, the company follows the direction of clean energy, ecological and environmental protection and effectively combines the capital operation and industrial management to create a world-class public utility service platform.

High Quality DEVELOPMENT

高質量發展

北京控股秉持「環境就是民生，青山就是美麗，藍天也是幸福」的綠色發展理念，勤勉奮發，矢志成為人民美好生活的建設者，在服務國家生態文明建設、提供社會清潔發展動能、滿足公眾品質生活需求中不斷成長，為時代的進步貢獻力量。

成立以來，北京控股

- 貢獻清潔能源，北京燃氣、中國燃氣天然氣售氣量累計達到3,875.1億立方米；
- 提供潔淨的生活生產用水，北控水務供水量累計達144.8億噸；
- 構建生態友好、可持續的水循環體系，北控水務污水處理量累計達407.2億噸；
- 收納固體廢物並將其轉變為能源，北控固廢平台、EEW GmbH合共完成垃圾處理量累計達6,589.7萬噸；
- 專業、安全、高效地處理危險廢物，北控固廢平台完成危廢處理量累計達50.4萬噸；
- 為品質生活提供綠色食品，燕京啤酒實現啤酒銷量共計9,151萬千升。

BEHL grasps the green development concept of “the environment is people’s livelihood, green mountain is beauty, blue sky is happiness” and work diligently to become the builders of the people’s good life, kept growing while serving the country in ecological civilization construction, providing social clean development momentum, meeting the public demand of quality life, and to contribute strength to the progress of era.

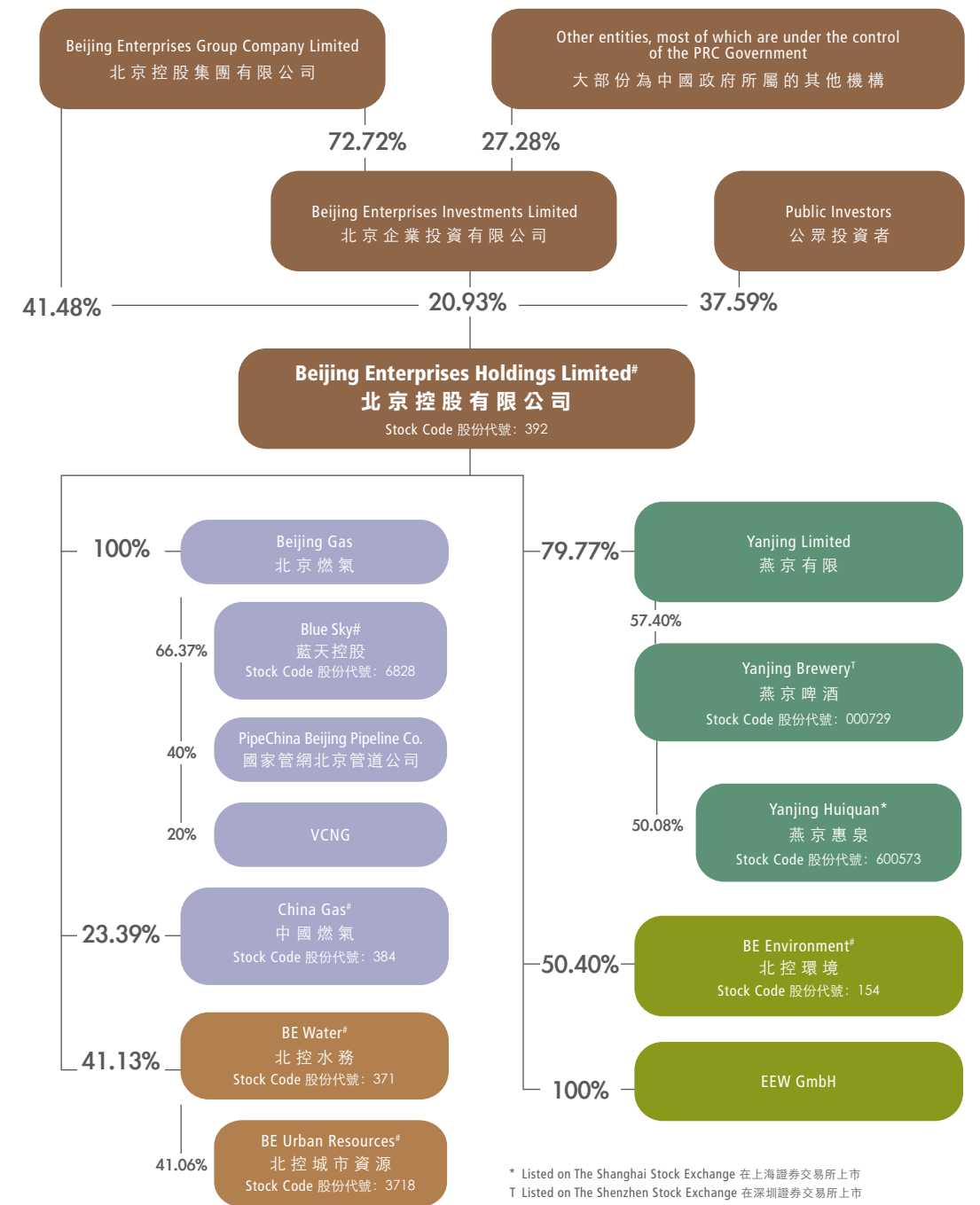
Since establishment, BEHL

- Contributed clean energy, with Beijing gas and China Gas selling 387.51 billion cubic meters of natural gas;
- Provided clean water for daily life and production. The water supply of BE Water has reached 14.48 billion tons;
- Built an eco-friendly and sustainable water recycling system, and the cumulative sewage treatment volume of BE Water supplies has reached 40.72 billion tons;
- Collected solid waste and turned it into energy. The total waste treatment volume of BEHL Solid Waste Treatment Platform and EEW GmbH was 65.897 million tons;
- Treated hazardous waste professionally, safely and efficiently, BEHL Solid Waste Treatment Platform has treated a total of 504,000 tons of hazardous waste;
- Provided green food for quality life. Yanjing Brewery has achieved a total beer sales volume of 91.51 million kiloliters.

公司架構

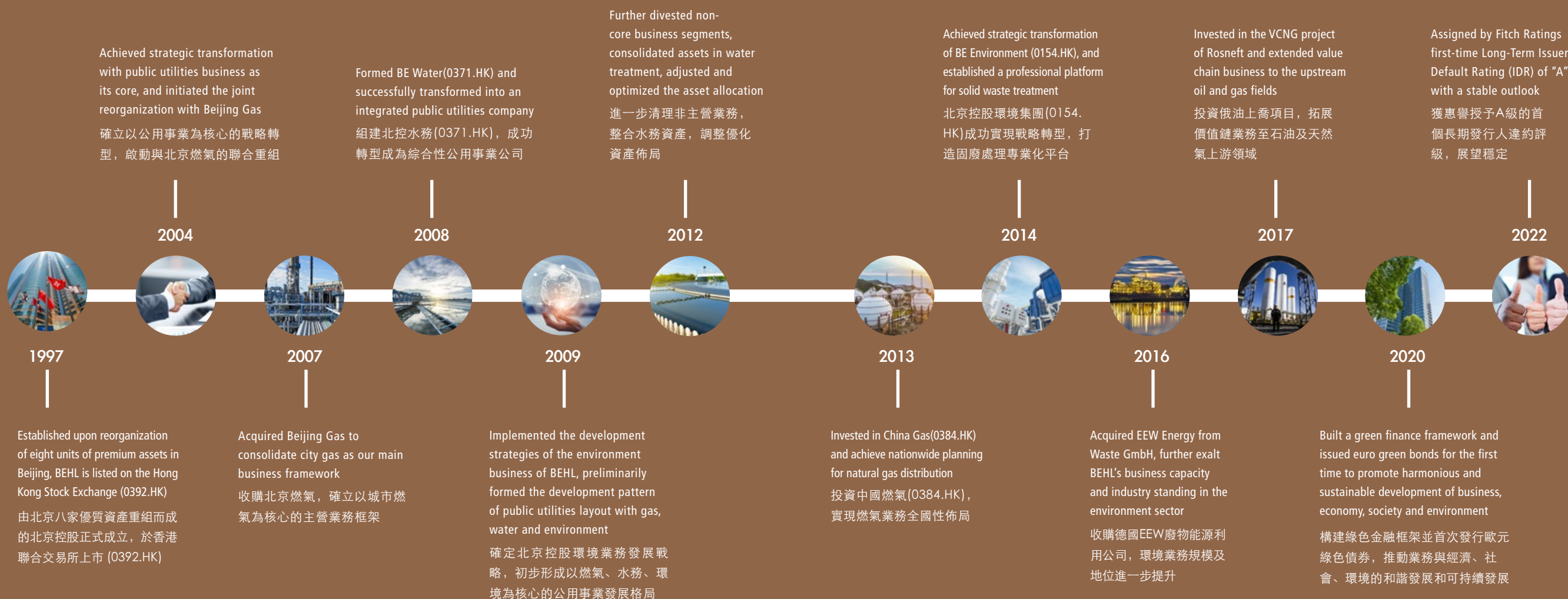
COMPANY STRUCTURE

(As at 31 December 2022 於二零二二年十二月三十一日)



* Listed on The Shanghai Stock Exchange 在上海證券交易所上市
 † Listed on The Shenzhen Stock Exchange 在深圳證券交易所上市
 # Listed on The Main Board of The Hong Kong Stock Exchange 在香港聯交所主板上市

發展里程碑



MILESTONES

業務佈局

服務世界



燃氣 水務 環境 啤酒

Gas
Water
Environment
Beer

燃氣 水務 環境 啤酒

Gas
Water
Environment
Beer

燃氣

NATURAL GAS

業務範圍涵蓋天然氣倉儲、輸送及銷售，以及城市燃氣管道建設及管理、車船用氣及加氣站、分佈式能源、液化石油氣、新能源相關技術產品開發、天然氣貿易及增值服務等，業務領域貫穿上游資源及長輸、中游燃氣市場及下游燃氣應用，實現了全產業鏈發展。年銷氣量約580億立方米，燃氣管網總長度超過55萬公里，服務超過5,000萬燃氣用戶。主要企業有北京市燃氣集團有限責任公司和中國燃氣控股有限公司。

The business comprises storage, transmission and sale of natural gas, construction and management of city gas pipelines, gas for road vehicles and marine vessels and gas stations, distributed energy, LPG, development of new energy related technologies and products, natural gas trading and value-added services, etc., threading through upstream resources and long-haul transmission pipeline, the mid-stream gas market and downstream gas consumption, thus boasts a well-developed and complete industrial chain. The annual gas sales volume is over 58 billion cubic meters, and the total gas pipeline network stretches more than 550,000 km in length, serving more than 50 million gas subscribers. The major enterprises of BEHL operating the business include Beijing Gas Group Company Limited and China Gas Holdings Limited.



北京市燃氣集團有限責任公司 Beijing Gas Group Company Limited



唐山 LNG 接收站應急調峰保障項目
Tangshan LNG Peak Adjustment Support Project

北京燃氣集團是中國城市燃氣行業內最大的單體城市燃氣供應商，管網規模、燃氣用戶數、年用氣量、年銷售收入均位列全國前茅，同時也是天然氣累計供氣量破千億立方米、年供氣量破百億立方米、日供氣量破億立方米的企業。

Beijing Gas Group Company Limited is the largest single city gas supplier in China's city gas industry, ranking among the top in China in terms of pipeline network size, number of subscribers, annual gas consumption and annual sales revenue, as well as being an enterprise whose cumulative natural gas supply exceeds 100 billion cubic meters, annual gas supply exceeds 10 billion cubic meters and daily gas supply exceeds 100 million cubic meters.

中國燃氣控股有限公司 China Gas Holdings Limited

中國燃氣是中國最大的跨區域能源供應服務企業之一，目前在中國30個省、市、自治區形成廣泛項目佈局，先後引進了韓國、印度、美國等國家的戰略投資者和合作夥伴，成為獨一無二的國際化能源合作平台。香港聯交所主板上市公司(0384.HK)，位列香港恒生綜合指數成份股、恒生中國企業指數成份股。

China Gas is one of the largest cross-regional energy supply service providers in China. Currently, it operates different projects in 26 provinces, municipalities and autonomous regions in China, and has strategic investors and partners from countries such as Korea, India and the United States of America, making it a unique platform for international cooperation in the energy realm. It is listed on the Main Board of the Hong Kong Stock Exchange (0384.HK) and is a constituent stock of the Hang Seng Composite Index and Hang Seng China Enterprises Index.

水務

WATER

業務範圍涵蓋城鎮水務(污水、供水、中水處理)、水環境綜合治理、海水淡化、涉膜及工業廢水等領域，水處理規模4,429萬噸/日，擁有1,447座水廠，覆蓋中國大陸29個省、市、自治區，以及馬來西亞、新加坡、葡萄牙等國家和地區，實現了全國性的戰略佈局，並成功進軍海外市場。主要企業為北控水務集團有限公司。

The segment operates urban water business (sewage, water supply and reclaimed water treatment), integrated water environment renovation, seawater desalination, membrane technology and industrial wastewater treatment, etc. The water treatment capacity is 44.29 million tons/day. It participates in 1,447 water plants that spread across 29 provinces, municipalities and autonomous regions in mainland China as well as countries and regions including Malaysia, Singapore, Portugal etc. The business has a strategic nationwide service network and also strong presence in overseas markets. The major enterprise operating the business is Beijing Enterprises Water Group Limited.



北控水務集團有限公司
Beijing Enterprises Water Group Limited



北京市大興區新鳳河流域綜合治理工程PPP項目安南濕地
Annam Wetland, PPP Project of Xinfeng River Basin Comprehensive Governance
Project, Daxing District, Beijing

北控水務集產業投資、設計、建設、運營、技術服務與資本運作為一體，秉承「客戶為源、創新為道」的經營宗旨，致力於成為深受信賴、引領發展的世界級水務環境服務商，連續十餘年榮登「中國水業十大影響力企業」榜首。香港聯交所主板上市公司（0371.HK），位列香港恒生綜合指數成份股、恒生香港中資企業指數成份股。

BE Water integrates industrial investment, design, construction, operation, technical service and capital operation. Adhering to the business purpose of “customer orientation through innovation capability”, BE Water is committed to becoming a trusted and developing-leading world-class water environmental service provider. BE Water has topped the list of “Top 10 Influential Enterprises in China’s Water Industry” for more than ten consecutive years. It is a listed company on the main board of the Hong Kong Stock Exchange (0371.HK) and a constituent of the Hang Seng Composite Index and the Hang Seng China-Affiliated Corporations Index.

環境

ENVIRONMENT

業務範圍涵蓋生活垃圾焚燒發電、危險廢棄物及醫療廢棄物處理、污泥處置、垃圾收運等領域，擁有國際領先的垃圾焚燒技術和項目管理水平，目前運營及在建中的項目總數38個，覆蓋中國15個省、市、自治區及海外17個城市。境內外垃圾焚燒發電處理規模達32,895噸/日。主要企業為EEW廢物能源利用公司、北京控股歐洲投資管理有限公司、北京控股環境集團有限公司和北京北控環保工程技術有限公司。

The business encompasses household waste incineration power generation, hazardous and medical waste treatment, sludge treatment, waste collection and transportation, etc. It employs leading international waste incineration technology and affords international project management standards. Currently, it has 38 projects in operation or under-construction in 15 provinces, municipalities and autonomous regions in China, and 17 cities overseas. The total waste incineration and power generation capacity reached 32,895 tons/day. The major enterprises operating the business include EEW Energy from Waste GmbH, Beijing Enterprises Holdings European Investment Management S.à r.l. Beijing Enterprises Environment Group Limited and Beijing Enterprises Holdings Environment Technology Co., Ltd.



EEW 廢物能源利用公司 EEW Energy from Waste GmbH

EEW GmbH是專注廢物能源利用的德國企業，主要業務為垃圾焚燒發電、供汽及區域供熱，目前德國市場佔有率排名第一，在德國、荷蘭、盧森堡擁有17間世界一流技術及設備的廢物能源利用工廠。EEW GmbH作為德國垃圾焚燒發電的領先企業，在裝備標準、運營效率、技術水平、排放指標等方面均代表世界一流水平。

EEW GmbH is an energy-from-waste company in Germany with waste incineration power generation, and steam and district heat supply as its main businesses. It owns the largest market share in Germany and runs 17 waste incineration power plants all equipped with world-class technologies and facilities in Germany, the Netherlands and Luxemburg. As a leading waste-to-energy enterprise in Germany, EEW GmbH represents the world-class level in terms of equipment standards, operational efficiency, technical level, and emission indicators.



EEW GmbH先進的技術和運營優勢在當地能源基礎設施中扮演了重要的角色
Relying on its advanced technology and operating advantages, EEW GmbH plays a vital part in the local energy infrastructure

北京控股固廢平台 BEHL Solid Waste Treatment Platform

北京控股固廢平台的主要企業為北京控股環境集團、北京北控環保工程技術有限公司及北京控股歐洲投資管理有限公司。北京控股環境集團是資本運作、資產整合及投資運營等模式從事固廢環境領域投資、建設和運營的專業化平台，目前擁有9個生活垃圾焚燒發電項目和1個危險及醫療廢物處理項目，為香港聯交所主板上市公司(0154.HK)。北控環保專注發展城市固體廢棄物、工業危險廢棄物、醫療廢棄物、建築廢棄物處置以及生態環境治理修復等環境保護領域，在全國範圍內成功投資6個城市生活垃圾處理項目及工業危險廢棄物處置項目。此外，北京控股歐洲投資管理有限公司於全國範圍內亦成功投資城市生活垃圾處理項目。

BEHL Solid Waste Treatment Platform including BE Environment, BEHET and Beijing Enterprises Holdings European Investment Management S.à r.l. Among which BE Environment is a professional platform for investment, construction and operation of solid waste treatment business via such as capital operation, assets consolidation or investment and operation modes. It currently owns 9 household waste incineration power generation projects as well as 1 hazardous and medical waste disposal treatment project. It is listed on the Main Board of the Hong Kong Stock Exchange (0154.HK). BEHET focuses on developing business in the environment protection arena including treatment of city solid waste, hazardous industrial waste, medical waste and construction waste, as well as, renovation and restoration of ecological environment. In China, it has invested in 6 city household waste treatment projects and industrial hazardous waste treatment projects. In addition, Beijing Enterprises Holdings European Investment Management S.à r.l. also successfully invested in municipal waste treatment projects domestically.

啤酒

BEER

以啤酒為主的快速消費品是北京控股業務重要組成部分和主要價值投資業務，北京燕京啤酒股份有限公司2022年實現啤酒銷量377萬千升，在國內擁有30多家全資和控股的啤酒生產基地，旗下擁有品牌價值約人民幣1,637億元的中國啤酒民族品牌，公司堅持新發展理念，緊扣「高質量發展」這一主題，在發展中開創了具有燕京特色的經營模式，形成了以市場優勢、產品優勢、品牌優勢、管理和技術優勢為主要內容的核心競爭力。

Fast moving consumer goods (mainly beer) is a key business and main value investment of BEHL. Beijing Yanjing Brewery Co., Ltd. achieved the sales volume of 3.77 million kiloliters in 2022. It has more than 30 wholly-owned and controlled beer production bases in China, and owns China's national beer brands with a brand value of about RMB 16.37 billion. The company adheres to the new development concept and closely follow the theme of "high-quality development". In the course of development, an operating model with Yanjing characteristics has been developed, forming a core competitive force with market advantage, product advantage, brand advantage, management and technical advantage as the main content.



北京燕京啤酒股份有限公司 Beijing Yanjing Brewery Company Limited

燕京啤酒是中國大型的啤酒企業集團和亞洲大型啤酒生產廠之一，位列中國輕工業百強企業、輕工業食品行業五十強、2022年亞洲品牌500強，旗下除燕京外，還擁有漓泉、惠泉、雪鹿等國內知名啤酒品牌。公司積極擁抱消費變革時代潮流，順應行業發展趨勢，加快轉變發展方式，追求更有效供給、更高端結構、更綠色可持續、更高效、更和諧的增長。深圳證券交易所上市公司(000729.SZSE)。

Yanjing Brewery is a large brewery group in China and one of the largest breweries in Asia, ranking among the Top 100 Enterprises in China Light Industry, Top 50 Enterprises in China Food Industry and the Asia's 500 Most Valuable Brands 2022. In addition to Yanjing, the company also owns famous domestic beer brands such as Liquan, Huiquan and Xuelu. Yanjing Brewery actively embraces the trend of consumption evolution, complies with the development trend of the industry, speeds up the transformation of development mode, and pursues more responsive supply, higher-end structure, more sustainable, more effective and more harmonious growth. It is listed on the Shenzhen Stock Exchange (000729.SZSE).



雪 鹿 啤 酒
Xuelu Beer



SUSTAINABILITY

Environmental Protection and
Social Responsibility

可
持
續

發
展

能源、環境和可持續發展已經成為人類社會必須面對和解決的課題。北京控股始終關注自身業務與經濟、社會、環境的和諧發展，設立可持續發展委員會，制定可持續的企業發展規劃並採取切實有效的途徑和措施，在經濟發展、環境保護和公益慈善等方面不斷努力實踐。

近年來，北京控股在生物多樣性保護、勞工權益、反貪腐、信訪舉報、應對氣候變化、健康安全等方面不斷加強制度建設。同時，亦積極響應國家「碳達峰」及「碳中和」目標，研究制定減排方案，規劃切實可行的淨零路線；大力拓展節能環保業務，為社會貢獻清潔能源；提供專業的水務及環境綜合服務，改善居民生活；攜手合作夥伴實現共贏，以先進的科技成果帶動行業發展；以人性化的服務方式，為顧客提供穩定優質的產品及體驗；悉心傾聽員工訴求，創造幸福工作空間；積極回應利益相關方的訴求，以穩健的經營回報廣大投資者的信任；積極參與公益事業，回饋社會各界對我們的支持和理解。

Energy, environment and sustainable development are pressing issues needed to be addressed and solved by human society immediately. BEHL has always been committed to the harmonious development of our business alongside the economy, society and environment. We also establish sustainability committee and develop sustainable business development strategy with effective ways and measures, and make sustained efforts on economic development, environmental protection and charity efforts.

In recent years, BEHL has been strengthening its systems in the areas of biodiversity protection, worker's rights and interests, anti-corruption, whistleblowing, climate change response, and HSE. Meanwhile, it also proactively responded to the country's "Carbon Neutrality" and "Emissions Peak" target. We studied and formulated emission reduction plans and enacted a feasible net zero route; We expanded our business eyeing cleaner energy supply to provide clean energy to the society. Our professional water and environmental services have helped improve the living standard of urban residents; We and our partners have joined hands to stimulate industrial development with advanced scientific and technological achievements; We have ensured a steady supply of quality products and experiences with humanized service; We carefully listened to the demands of employees to create a happy working space; We proactively responded to the stakeholders' concerns to repay investors' trust with stable operation; We also actively engaged in social welfare in return for the support and understanding of all walks of life.

企 業 管 治

CORPORATE
GOVERNANCE
probity makes excellence

規 範 、 科 學 、 公 開 、 高 效 Systematic, Scientific, Open and Effective

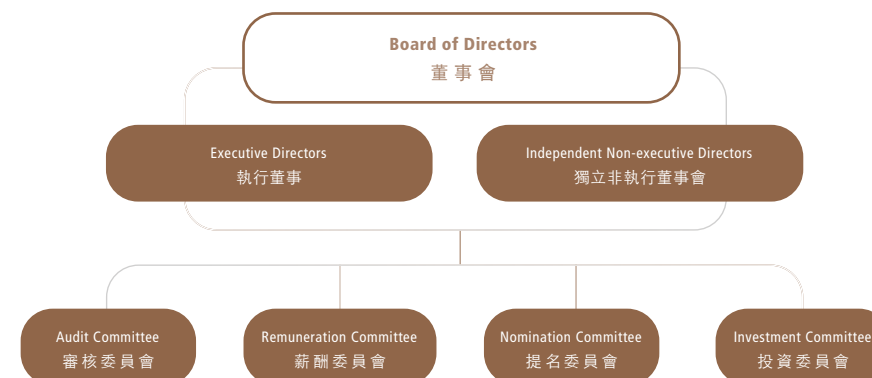
北京控股致力於高標準的企業管治，嚴格遵守香港聯合交易所上市規劃中有關公司管治要求，秉承規範、科學、公開、高效的企業管治原則，建立並實施了一系列完善的企業管治架構和管治措施，並通過嚴格的內部監控及外部審計，努力維護股東、客戶、員工等相關各方人士的利益。

董事局由整體素質、專業化水平及戰略素養較高的專業人士組成，負責制定公司政策，確定戰略方向，確保公司設置有效的內部監控環境。董事局下設以獨立非執行董事為主體的審核委員會、薪酬委員會和提名委員會，形成規範、穩健、高效的管治特色。

BEHL strives to meet high corporate governance standards and complies strictly with the corporate governance requirements as prescribed in the Listing Rules of the Hong Kong Stock Exchange. We work by the emphasis on being systematic, scientific, open and effective in corporate governance and have in place a sound corporate governance structure and implemented a host of governance measures. Corporate practices are also subjected to stringent internal control and external audit to make sure that the interest of all stakeholders including shareholders, customers and employees are safeguarded.

The Board of Directors is made up of professionals with overall higher caliber and who afford higher level of professionalism and strategic literacy. They are responsible for formulating company policies, setting strategic directions and ensuring the company has an effective internal control environment. The Audit Committee, Remuneration Committee and Nomination Committee under the Board comprise mainly INEDs to assure the company of systematic, robust and effective governance.

董 事 會 架 構 Board Structure





VISIONS

in facilitating urban
development

發展 願景

能源合一 服務合一
Integration of Energy and Services

從過去到未來，專注發展綜合性公用事業領域，將是北京控股一如既往的堅持與堅守。北京控股將努力把握生態文明建設契機，聚焦清潔能源、民生改善和生態環境建設，持續強化主業形態和業務基礎；積極響應國家「一帶一路」發展戰略，不斷拓展海外市場，完善海外業務佈局；深耕細作所屬業務領域，致力成為行業引領者，持續推動業務協同發展，提升綜合競爭力；秉承股東利益最大化的宗旨，堅持資本運營與產業經營有機結合，打造「能源合一，服務合一」的國際一流綜合性公用事業公司，努力回饋股東，服務民生，回報社會。

BEHL has been and will always be committed to developing integrated public utility service business. It will strive to capture opportunities arising from the construction of an ecological society and direct its attention on developing clean energy, improving people's livelihood and the ecological environment, so that it can continue to strengthen its major businesses and business foundation. We will, with enthusiasm, act in response to the country's "One Belt One Road" development strategy, expand overseas markets and optimize the layout of overseas operations, as well as step up effort to develop our business in greater depth that BEHL may become an industry leader. It will continue to promote synergistic development of its businesses and enhance its integrated competitiveness. And, to achieve the goal of presenting the maximum benefit to shareholders, we will insist on marrying capital operation and industrial operation and turn BEHL into a leading international integrated public utility service company capable of offering integrated and comprehensive energy services. We are committed to rewarding shareholders and the society as well as serving citizens.

北京控股集團

有限公司

BEIJING ENTERPRISES

Group Company Limited

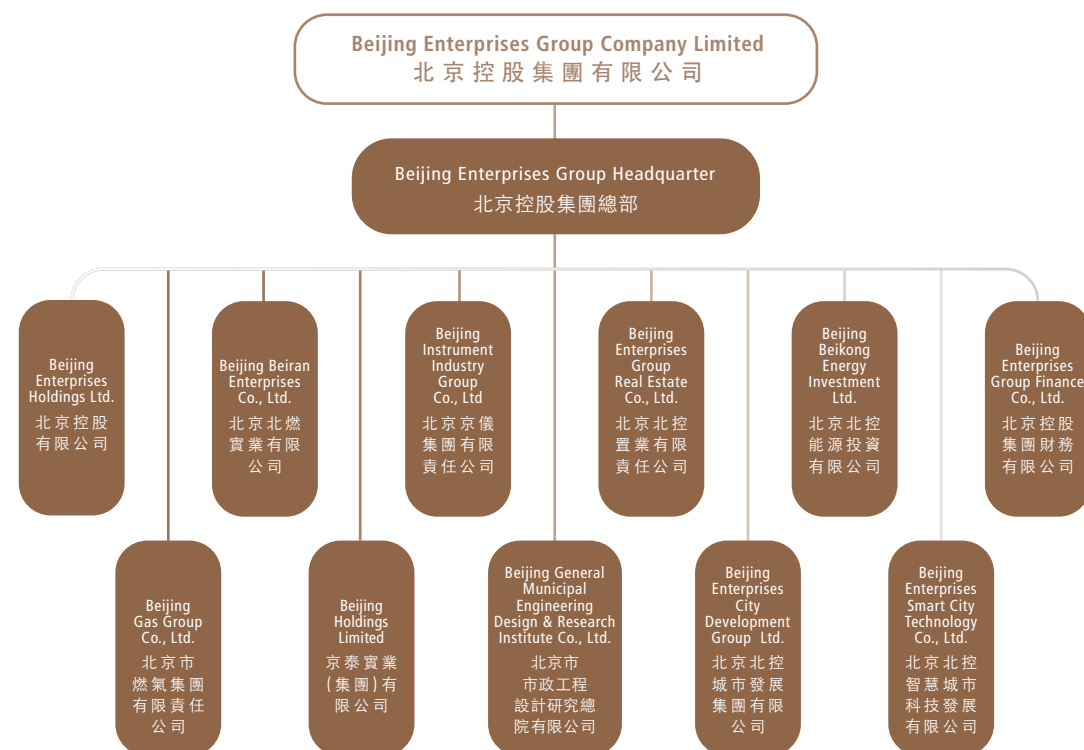


北京控股集團有限公司
Beijing Enterprises Group Company Limited

北控集團是北京控股有限公司的控股股東，是北京市人民政府出資設立的、兼具境內外實業經營和資本運營功能的大型國有企業集團，是首都基礎設施和公用事業重要投融資平台。北控集團積極拓展京外境外市場，業務涉及城市能源、水務與水環境、固廢、規劃設計與項目管理、綜合管廊、智慧城市、現代城市服務、科技服務、高端裝備製造、啤酒及葡萄酒、金融服務與價值投資多個領域，範圍覆蓋全國400多個城市及港澳台地區，海外延伸到歐洲、美洲和東南亞地區，旗下擁有各級全資、控股、參股企業700餘家。截至2022年底，北控集團資產總額超過人民幣4,390億元，連續多年入選中國企業500強。

Beijing Enterprises Group is the controlling shareholder of Beijing Enterprises Holdings Limited. Funded by the People's Government of Beijing Municipality, Beijing Enterprises Group is a large state-owned corporation that engages in domestic and overseas enterprise and capital operations and is an important investment and financing platform for the infrastructure and public utility businesses in Beijing. Beijing Enterprises Group has been actively developing markets outside Beijing and abroad for its businesses in areas including city energy, water business, water environment, solid waste treatment, planning, design and project management, integrated pipeline corridor, smart city, modern urban services, technological services, high-end equipment manufacturing, beer and grape wines, financial services and value investment. It has business presence in over 400 cities across the country, as well as Hong Kong, Macau and Taiwan. It also extends overseas business to Europe, Americas and Southeast Asia. The family comprises more than 700 wholly owned subsidiaries, holding companies and affiliate companies at all levels. As at the end of 2022, its assets worth a total of more than RMB 439 billion. It has been on the Top 500 Chinese Enterprises list for consecutive years.

北 控 集 團 架 構 圖 Structure of Beijing Enterprises Group





北京控股有限公司
BEIJING ENTERPRISES HOLDINGS LIMITED